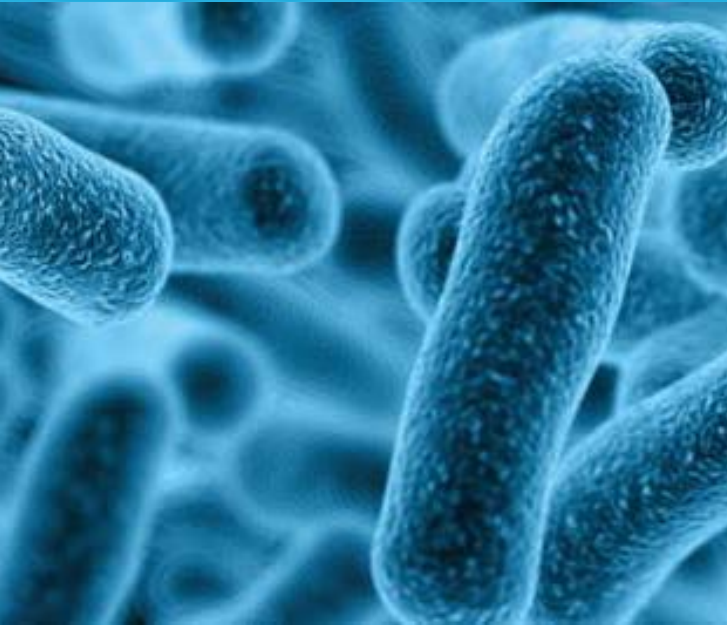


Legionellosis Outbreak Toolbox

Updated: November 2019



Key reference documents

- Legionella and the prevention of legionellosis (Geneva: World Health Organization; 2007).
- WHO legionellosis fact sheet (Geneva; World Health Organization; 2018).



Case definitions

WHO suggested outbreak case definition¹

Suspected case:

- Relevant pneumonic or non-pneumonic illness but no supporting microbiological evidence.

Confirmed case:

- Relevant pneumonic illness and microbiological evidence of infection.

Discarded case:

- No microbiological evidence of infection.

WHO surveillance case definitions¹

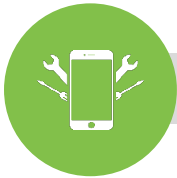
- Combined microbiological and epidemiological case definitions are used for surveillance of legionellosis. Depending on the diagnostic method used and the result, cases are classified microbiologically as either **confirmed** or **presumptive**.
- Based on the patient's clinical history, cases are classified as one of the following:
 - Legionnaires' disease (relevant pneumonic illness and microbiological evidence of infection).
 - Pontiac fever or similar illness (relevant non-pneumonic illness and microbiological evidence of infection).
 - Asymptomatic legionellae infection (no illness compatible with microbiological result).
 - Legionella infection (microbiological evidence of infection but symptoms not known).

¹ From: Legionella and the prevention of legionellosis (Geneva: World Health Organization; 2007).

- Suspected legionellosis (relevant pneumonic or non-pneumonic illness but no supporting microbiological evidence).

WHO other definitions:

- **Hospital acquired (nosocomial)**
 - Date(s) of admission to hospital(s) before onset of symptoms.
- **Community acquired**
 - Known exposure to cooling towers, whirlpool spas, showers, etc.
- **Travel associated**
 - Countries visited, dates of stay, name and address of accommodation used, room number, name of tour operator, use of showers, spa pools, etc.
- **Domestically acquired**
 - Use of domestic water system during incubation period, in absence of other risk exposures.



Data collection tools

- Case report forms: Not available.
- Line list: Not available.
- Electronic tools: Not available.



Laboratory confirmation

- Chapter 11, Legionella and the prevention of legionellosis (Geneva: World Health Organization; 2007).



Response tools and resources

- Not available.



Training

- Not available



Other resources

- [Legionnaires' disease outbreak case definitions](#) (Stockholm; European Centre for Disease Prevention and Control).
- [Legionnaires' disease outbreak investigation toolbox](#) (Stockholm: European Centre for Disease Prevention and Control; 2019).
- [CDC Outbreak Investigation](#) (Atlanta: Centers for Disease Control and Prevention; 2019).
- [CDC Epidemiology Investigation Resources](#) (Atlanta: Centers for Disease Control and Prevention, 2018).
- [CDC Legionella fact sheet](#) (Atlanta: Centers for Disease Control and Prevention, 2018).
- [CDC Legionella materials](#) (Atlanta: Centers for Disease Control and Prevention, 2018).
- [European Technical Guidelines for the Prevention, Control and Investigation of Infections Caused by *Legionella* species](#), (Stockholm; The European Guidelines Working Group; 2017).